

# Karcher NT65/2 TACT<sup>2</sup> Tc



Twice the performance.

Vacuums more. Vacuums longer. Always powerful.



Please note: Stainless steel version not available in Australia. Plastic version with tipping trolley only.



## It takes two.

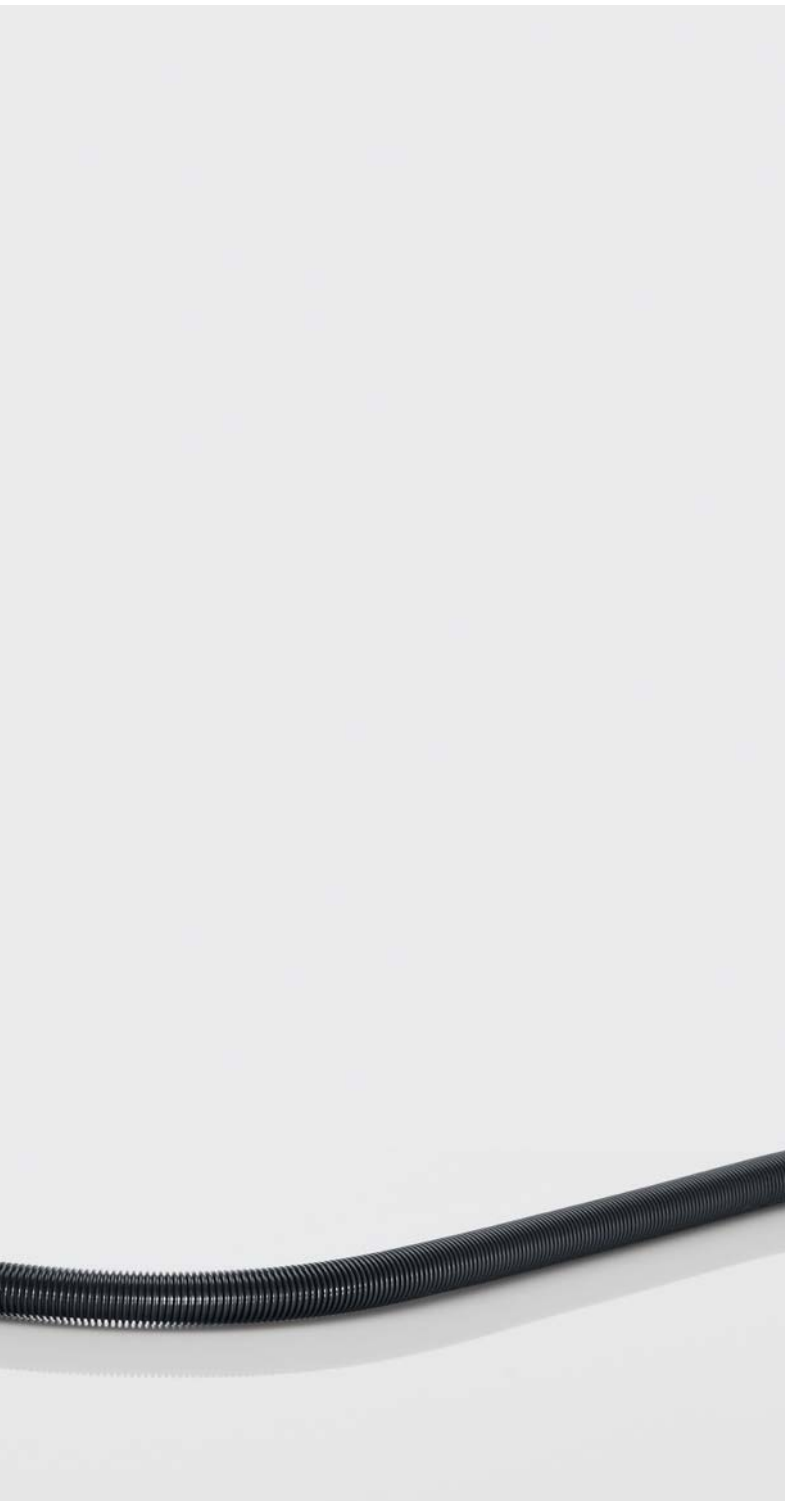
Kärcher presents the Tact<sup>2</sup> – its new top-of-the-range professional wet and dry vacuum cleaner. This extension of the popular Tact system range achieves the highest ever productivity still with its automatic clean filter system. With its two motors, the Tact<sup>2</sup> boasts consistently high suction power, and with its enhanced filter life, you can virtually forget about having to change the filter. Kärcher NT vacuums with Tact<sup>2</sup> are complete systems that are not only excellent at removing large amounts of fine dust but can also tackle dirt, debris and water. The various options in this vacuum range mean that it can provide the ideal solution, whatever the application and wherever consistently high suction power is needed – building sites, in the food sector, the automotive industry or in industry in general.



**PowerVac**  
CLEANING EQUIPMENT & SERVICE  
[www.powervac.biz](http://www.powervac.biz)

PO Box 505, Mt Hawthorn, Western Australia, 6915  
Cnr Scarborough Beach Rd & Main St  
Osborne Park, Western Australia, 6017

P ++61 8 9242 4751 F ++61 8 9242 4752  
E [info@powervac.biz](mailto:info@powervac.biz) ABN 51 009 277 356



**PowerVac**  
CLEANING EQUIPMENT & SERVICE  
[www.powervac.biz](http://www.powervac.biz)

PO Box 505, Mt Hawthorn, Western Australia, 6915  
Cnr Scarborough Beach Rd & Main St  
Osborne Park, Western Australia, 6017

**P** ++61 8 9242 4751    **F** ++61 8 9242 4752  
**E** [info@powervac.biz](mailto:info@powervac.biz)    **ABN** 51 009 277 356



# Specialists are needed everywhere.

The Kärcher Tact<sup>2</sup> systems are extremely popular as specialist systems and as all-rounders, thanks to their high level of mobility and excellent performance, their solid construction and their wide range of practical design features. Two vacuums in the range are supplied with the entire antistatic package as standard. The extent to which this eases workload is not to be left as underestimated where large amounts of fine dust need to be tackled regularly. Models with a tilting chassis are particularly efficient in industrial settings, where the removal of liquids, dirt and debris is called for.



## 1 The dust challenge

NT 65/2 Tact<sup>2</sup> and NT 75/2 Tact<sup>2</sup> Me are expert at removing fine dust particles; they are supplied with the full antistatic package and a 4 m hose as standard. They are also ideal for grinding floors, a task that previously required the use of much heavier and larger vacuums.

## 2 Sacks of vacuumed debris

Kärcher Tact<sup>2</sup> vacuums can handle whatever comes their way. A split sack of cement? No worries, just get the Kärcher Tact<sup>2</sup> out. There's no need to add any extra attachments, there is ample room still for not only fine cement dust, but also debris and liquids.

## 3 Anywhere and everywhere

A unique, innovative feature of NT vacuums is the adjustable handle. Simply adjust the quick-release fasteners for variable height adjustments. No tools needed. This makes it perfectly adjustable for each individual operator, for transport and space-saving storage. The very large wheels (250 mm) make it easy to push around and can even handle steps, steel and uneven surfaces. Then add to this tough stainless steel castors with a specially designed surface, securely screwed to the bumper.



### 1 Design and productivity

Kärcher Tact<sup>2</sup> vacuums with a tilting chassis are the diamond standard for use in industrial premises. With their full range of accessories (pictured: hose, bend and crevice nozzle), the compact design and manoeuvrability make light work of expertly cleaning even hard-to-reach areas.

### 2 Full circle 360°

Full stretch, full power. With its hose range of a full 4 metres and the wet/dry floor nozzle supplied as standard with an operating width of 360 mm, large areas are vacuumed in no time at all. This saves precious time, especially when it comes to vacuuming liquids or shavings and chippings. It's a good thing the Kärcher Tact<sup>2</sup> vacuums don't mind getting wet.

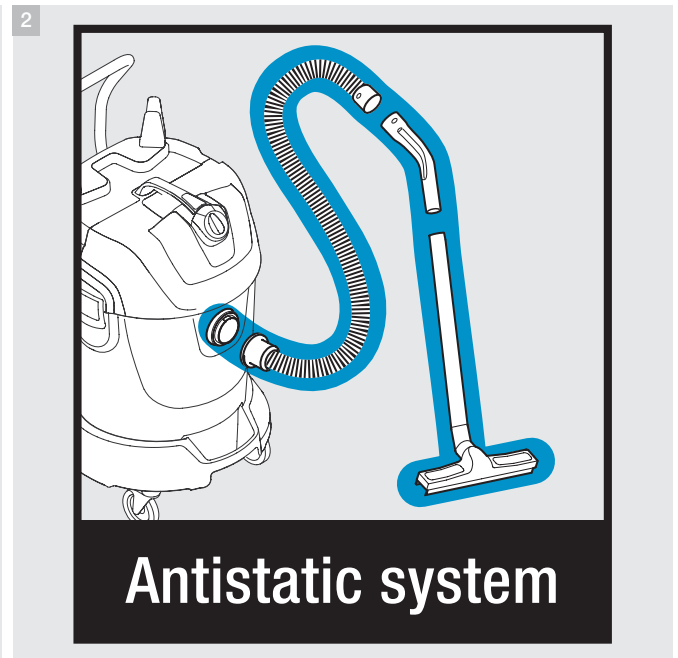
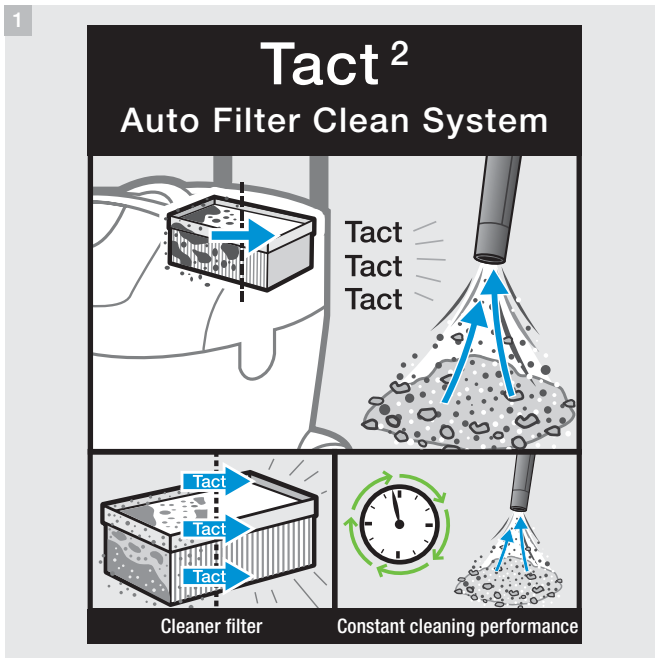
### 3 Easy in, easy out

Damp debris, dirt and liquids are not exactly weightless. With its tilting chassis, however, the container is easy to empty – simply hold the handle, tilt the container and empty. The centre of gravity is in the chassis, which means it is secure on the ground when emptied. After opening the two quick-release fasteners, the container can be fully removed from the chassis. Models with a tilting chassis have a moisture-resistant PES fleece filter as standard.



# Professional from head to toe.

What distinguishes the revolutionary Tact<sup>2</sup> system from the already legendary Tact system is a second valve which is set to clean every 15 seconds, resulting in a cleaning cycle every 7.5 seconds. This, combined with two motors, guarantees the Tact<sup>2</sup> continuous and lasting performance. The sturdy turn switch allows the operator to select either operating mode – with or without the Tact system.



## Twice as innovative – the Tact<sup>2</sup> filter system

1 The innovative flat pleated filter can be taken out from the clean side and is separated into two halves that are cleaned in alternation with blasts of air. Fine dust will not block the filter. The air stream remains consistently high for long periods of time. This means that over 1,000 kg of category A mineral dust can be vacuumed without even having to think about changing the filter.

## Antistatic package:

2 Static discharge is an accumulation of electric charge that builds up in an electrically insulating material as a result of a large difference in electric potentials. Depending on the environment, electric potentials can reach over 25,000 V, often just by walking on carpet or vacuuming fine dust. The complete antistatic package for the new Tact<sup>2</sup> puts an end to this: the bend, the hose and the vacuum nozzles are electrostatically conductive which means that the vacuum is always earthed.

## A new era of mobility: light and simple.



**Adjustable handle**  
for convenient transport.



**A light tap**  
tilts the vacuum into its transport position.



**Easy for two people to carry**  
and then empty the container.

# Just the trick for everyone and everything.

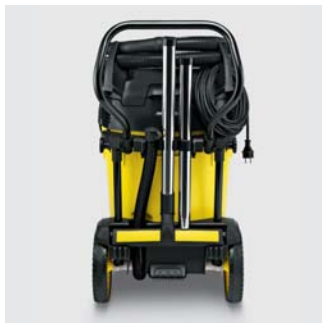
The Tact<sup>2</sup> range of vacuum cleaners includes specialist machines for fine dust, liquids and debris. With two motors and Tact<sup>2</sup> filter cleaning, they just go on and on. A wide range of specialist solutions also help to make light work of vacuuming. The NT 65/2 Tact<sup>2</sup> and NT 75/2 Tact<sup>2</sup> Me models come with the full antistatic package with an electrostatically dissipative hose and are earthed right through to the suction hose connection.



Tool holder: tools are always secured and ready to hand. The spacious tray can hold not only small parts but also electric tools, bottles, screwdrivers and spanners.



Drainage hose to directly empty vacuumed liquids. The cover remains tightly closed until it is ready to drain the water.



Vacuum pipes and floor nozzles can be stored in any direction in the accessory holders. There is a specially designed holder for the 4 m hose and the 10 m rubber cable.



Locked in place: the container lock on the tilting chassis is made of strong aluminium. With two people carrying the Tact<sup>2</sup> the container remains securely fixed onto the chassis. If transported on its side the container cannot tip out.

## \* AUSTRALIAN MODEL



NT 65/2 Tact<sup>2</sup>

- Tact<sup>2</sup>-Auto Filter Clean System
- Continuous/complete antistatic system
- Adjustable handle

\* NT 65/2 Tact<sup>2</sup> Tc

- Tact<sup>2</sup>-Auto Filter Clean System
- Accessories / hose holder
- Moisture-resistant PES filter

NT 75/2 Tact<sup>2</sup> Me

- Tact<sup>2</sup>-Auto Filter Clean System
- Complete antistatic system
- Integrated tray on top of the casing

NT 75/2 Tact<sup>2</sup> Me Tc

- Tact<sup>2</sup>-Auto Filter Clean System
- Adjustable handle and drain hose
- Moisture-resistant PES filter

### Technical data

		NT 65/2 Tact <sup>2</sup>	* NT 65/2 Tact <sup>2</sup> Tc	NT 75/2 Tact <sup>2</sup> Me	NT 75/2 Tact <sup>2</sup> Me Tc
Air flow	l/s	2 x 74	2 x 74	2 x 74	2 x 74
Vacuum	mbar/kPa	254/25.4	254/25.4	254/25.4	254/25.4
Container capacity	l	65	65	75	75
Max. power rating	W	2760	2760	2760	2760
Standard nominal width	mm	40	40	40	40
Cable length	m	10	10	10	10
Sound level	dB (A)	73	73	73	73
Weight	kg	24.5	26.5	25.5	27.5
Dimensions (L x W x H)	mm	575 x 490 x 880	685 x 560 x 905	575 x 490 x 880	685 x 560 x 920

### Features

		NT 65/2 Tact <sup>2</sup>	* NT 65/2 Tact <sup>2</sup> Tc	NT 75/2 Tact <sup>2</sup> Me	NT 75/2 Tact <sup>2</sup> Me Tc
Suction hose with bend	m	4 (el.)	4	4 (el.)	4
Suction pipe, metal, 2 x 0.5 m		■	■	■	■
Filter bag		Paper	Paper	Paper	Paper
Wet / dry floor nozzle	mm	360	360	360	360
Crevise tool		■	■	■	■
Stainless steel container		-	-	■	■
Flat pleated filter		Paper	PES	Paper	PES
Order No.		1.667-230.0	1.667-231.0	1.667-232.0	1.667-233.0

■ Included in delivery.